

WELCOME!



# BENSON POLYTECHNIC H.S. DAG #6 / APRIL 25, 2019

# INTRODUCTIONS



## **PORTLAND PUBLIC SCHOOLS**

Brian Oylear, Project Director  
Jen Sohm, Project Design Manager  
Jamie Hurd, Project Manager



## **BASSETTI ARCHITECTS**

Lorne McConachie, Design Principal  
Joe Echeverri, Project Manager  
Holly Grosvenor, Design  
Betty Lou Poston, Design  
Aydin Ebran, Design



## **ARCHITECTURAL RESOURCES GROUP**

Caitlin Cranley, Historic Architect



## **ANDERSEN CONSTRUCTION**

Brian Price, Project Executive  
Ben Gengler, Senior Project Manager  
Erin Storlie, Preconstruction Manager  
Canaan Chapman, Diversity Outreach



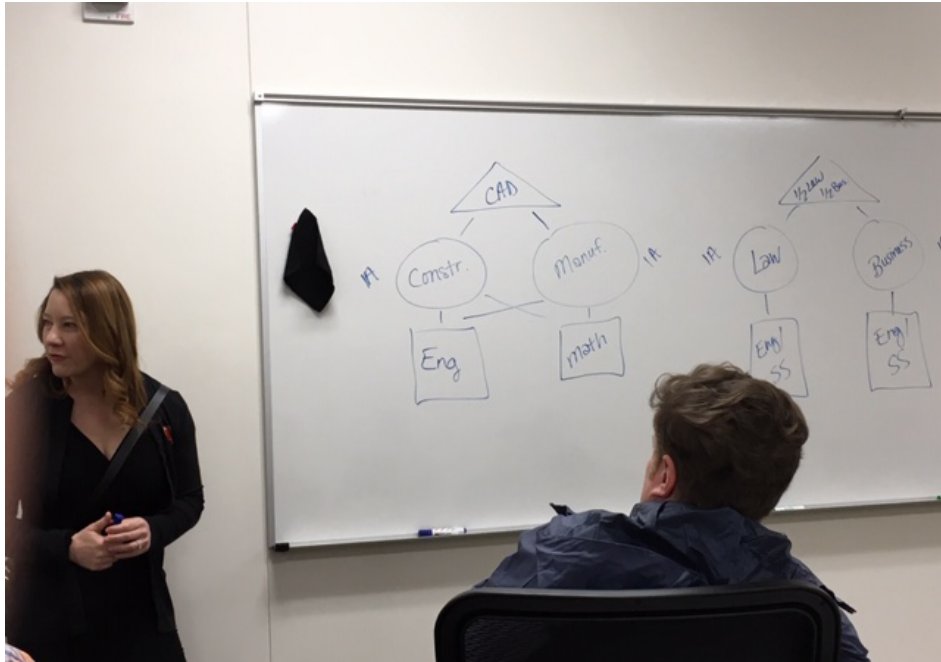
# SUBCOMMITTEE FOLLOW-UP / ROB JOHNS

# SUBCOMMITTEE SUGGESTIONS

- + Art Installation: Brian Gerber
- + Connecting to Benson History and Tools: Brian Gerber
- + CTE & Historical Context: Glen Pak
- + Health Sciences: Kevin Clark
- + Manufacturing: Kevin Clark
- + Aviation/Robotics: Kevin Clark
- + Automotive: Reuben Gilmore
- + Music/Band/Arts: Reuben Gilmore, Janice Choy-Weber, William Horner
- + Science Labs & Makerspace: Reuben Gilmore
- + Digital Media: Janice Choy-Weber
- + Environmental Conservation: Luke Hotchkiss
- + Auditorium: Rob Johns
- + Transportation Major: Rob Johns
- + Connecting the campus to the city - can we find creative ways to take advantage of the infrastructure of the city? Ex. engineering, electrical, storm water = fluid dynamics physics: Peter Koonce
- + Architecture Major: William Horner
- + Student Perspective: William Horner

# PROJECT TOURS - CTEC / OBSERVATIONS

# CTEC TOUR



# CTEC TOUR



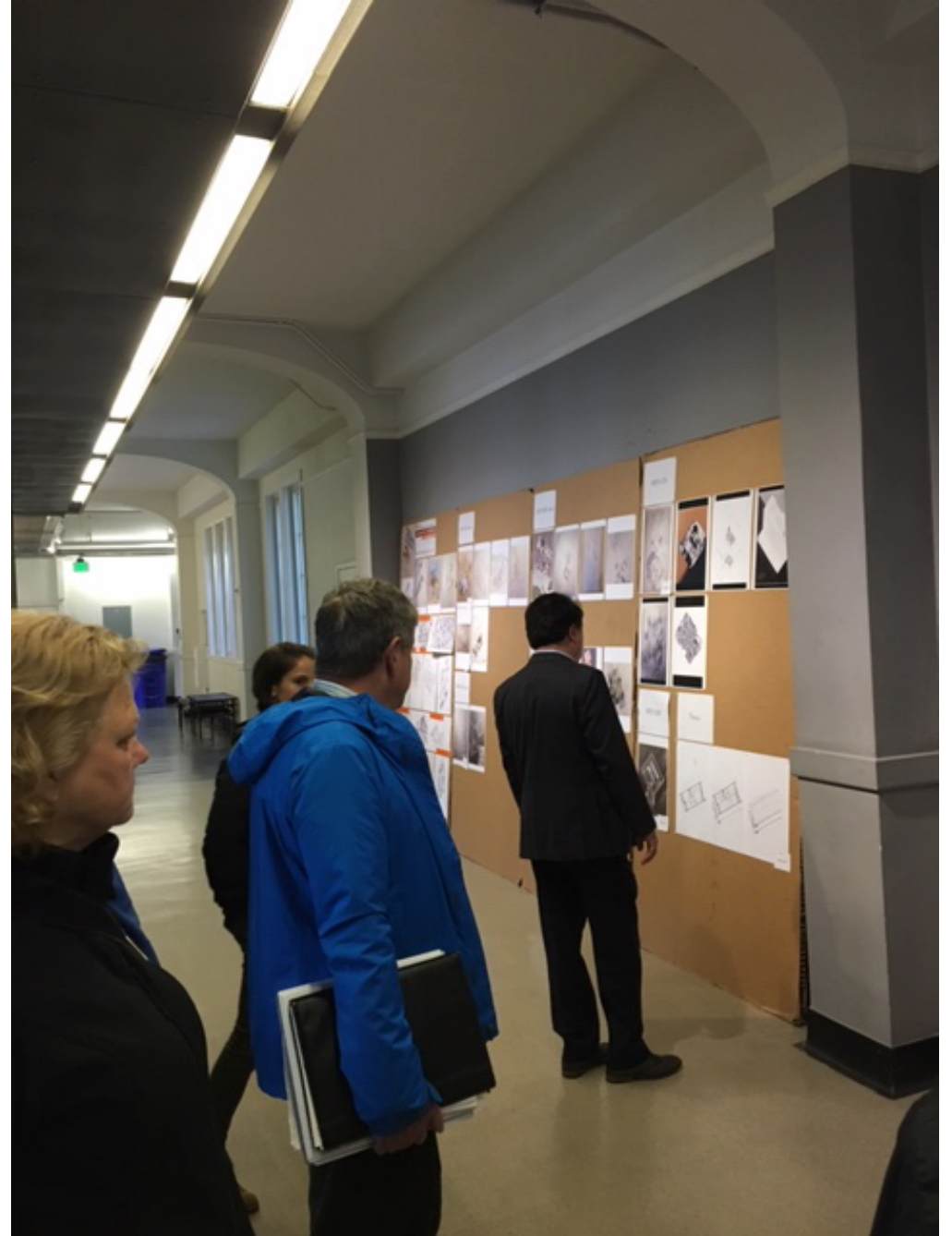


# PROJECT TOURS - PSU / OBSERVATIONS

# PSU TOUR



# PSU TOUR



# PROJECT UPDATE / PORTLAND PUBLIC SCHOOLS



# Project Update

- Stakeholder Meetings
- Benson Tech Show
- School Tours
- School Board Meeting
- Sustainability/Eco-charrette Workshop
- CMGC procurement process & selection
- BDS Early Assistance Meeting
- Transportation survey/report in process
- Construction manager selection in process





## ***BOE Resolution 5859 , approved 3/19***

- ***Updated Master Plan dated 3/13/19***

- Separate new Multiple Pathways to Graduation (MPG) building on Benson parking lot
- Integrate PISA, Evening & Summer, Pioneer & Virtual Scholars classrooms & offices
- Increase budget to \$330M
- Evaluation of adding Alliance at Meek to the new MPG building
- Marshall & Kenton swing space and phasing plans to be determined



## ***Anticipated upcoming BOE processes***

- May 21 BOE Worksession for Meek @ MPG Analysis
- May 28 for Meek @ MPG Resolution



# Next Steps

- Benson Tech Modernization Schematic Design Open House: June 6, 5:30pm
- Student DAG Grant HS Tour – end of May
- 90% SD Cost Estimate
- Target Value Design Workshop
- Stakeholder outreach: Benson Tech staff meeting, alumni association, SHPO, Portland Historic Landmarks Commission, Neighborhood Association
- Marshall & Kenton: determine project scope



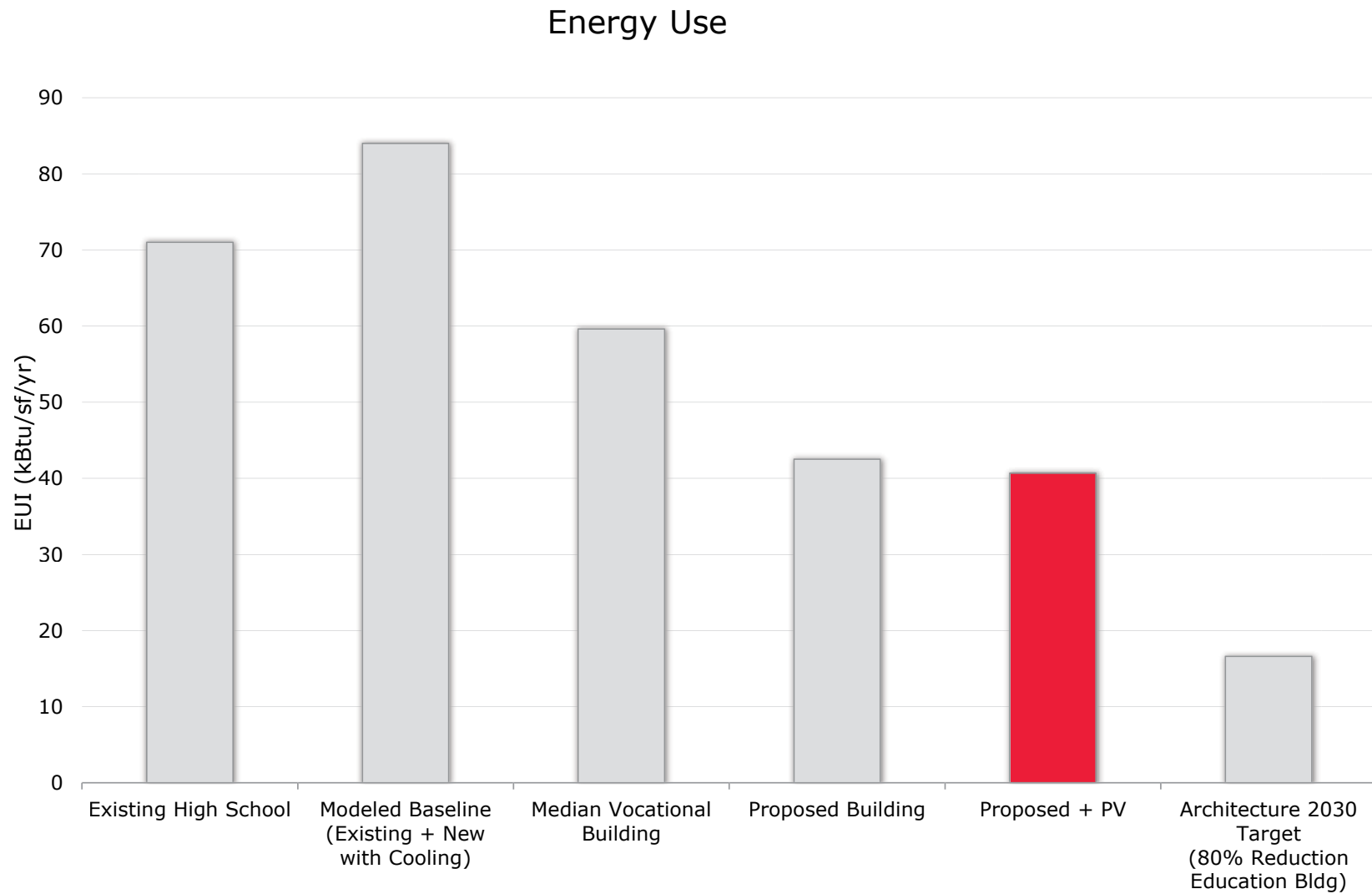
# TECH SHOW



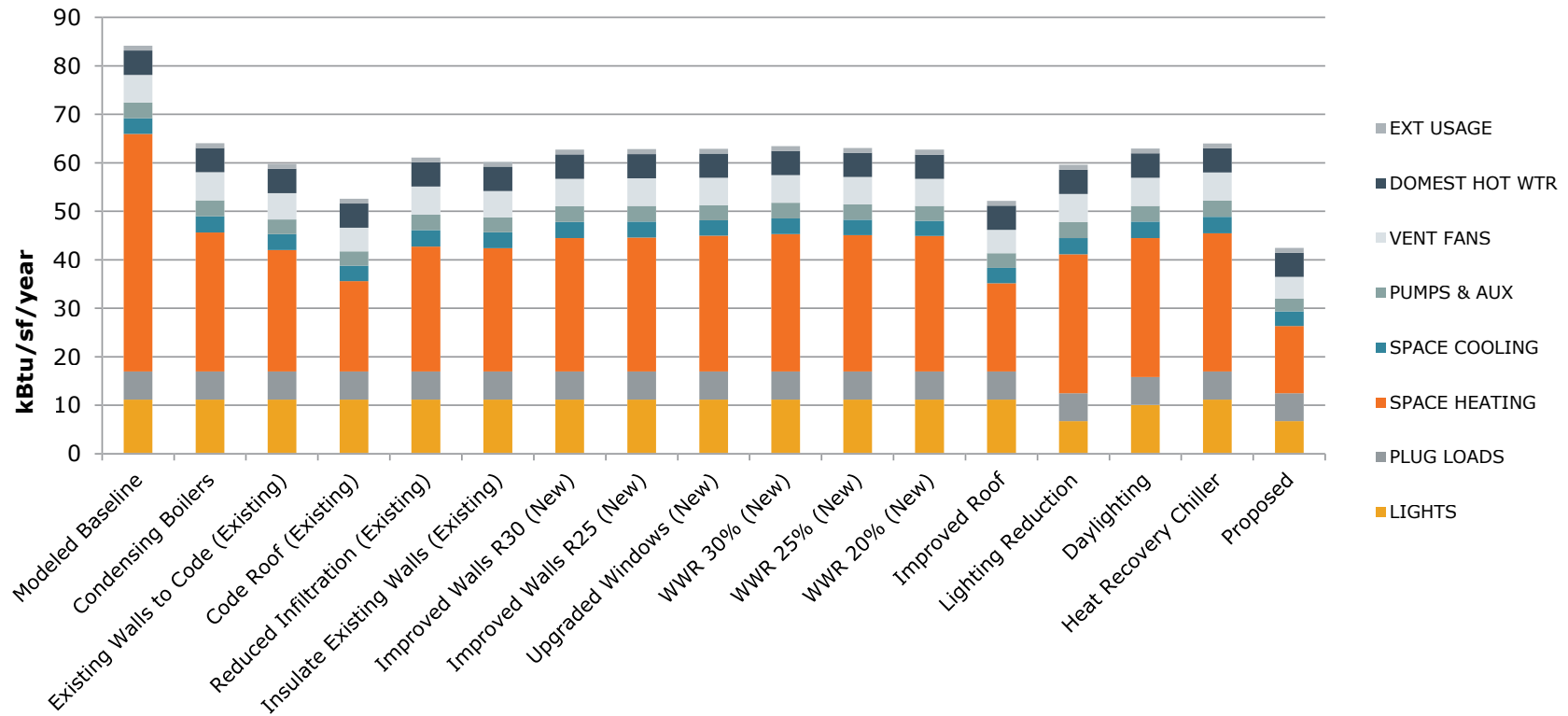
# ECO-CHARRETTE



## Energy Use Goal Setting



## Energy Use Goal Setting



# SUSTAINABILITY GOALS



SOLAR ELECTRIC PANELS



DAYLIGHTING



STORMWATER MITIGATION



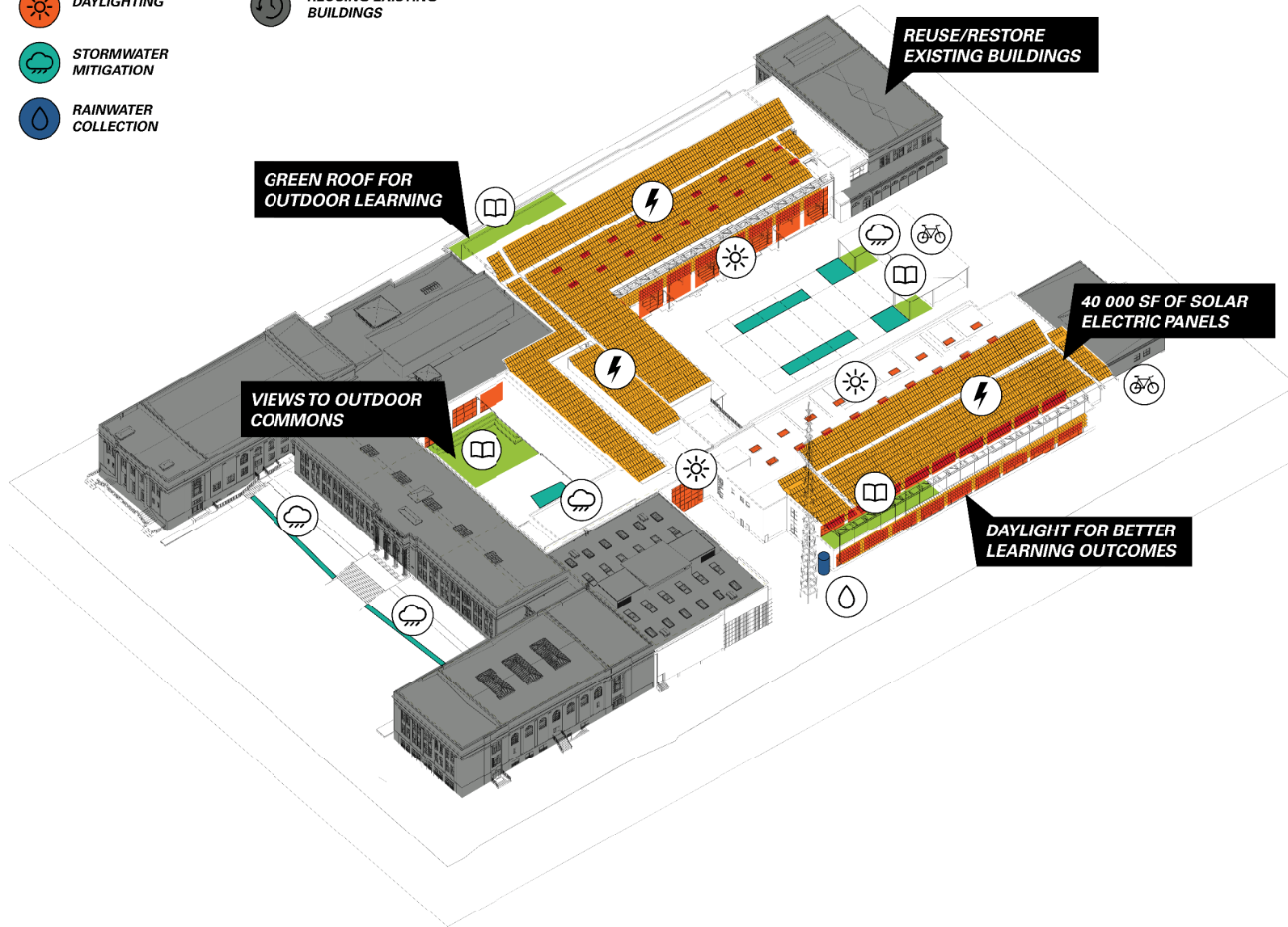
RAINWATER COLLECTION



OUTDOOR CLASSROOMS

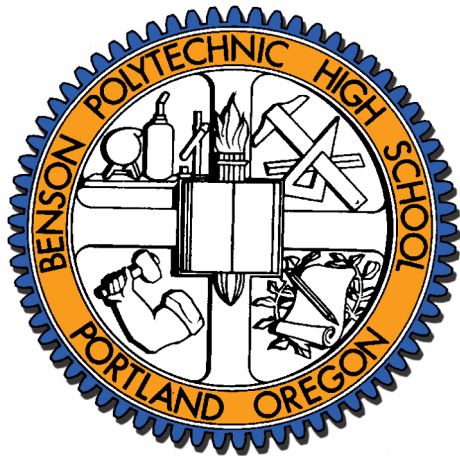


REUSING EXISTING BUILDINGS



# EXTERIOR DESIGN / OVERVIEW

# GUIDING PRINCIPLES

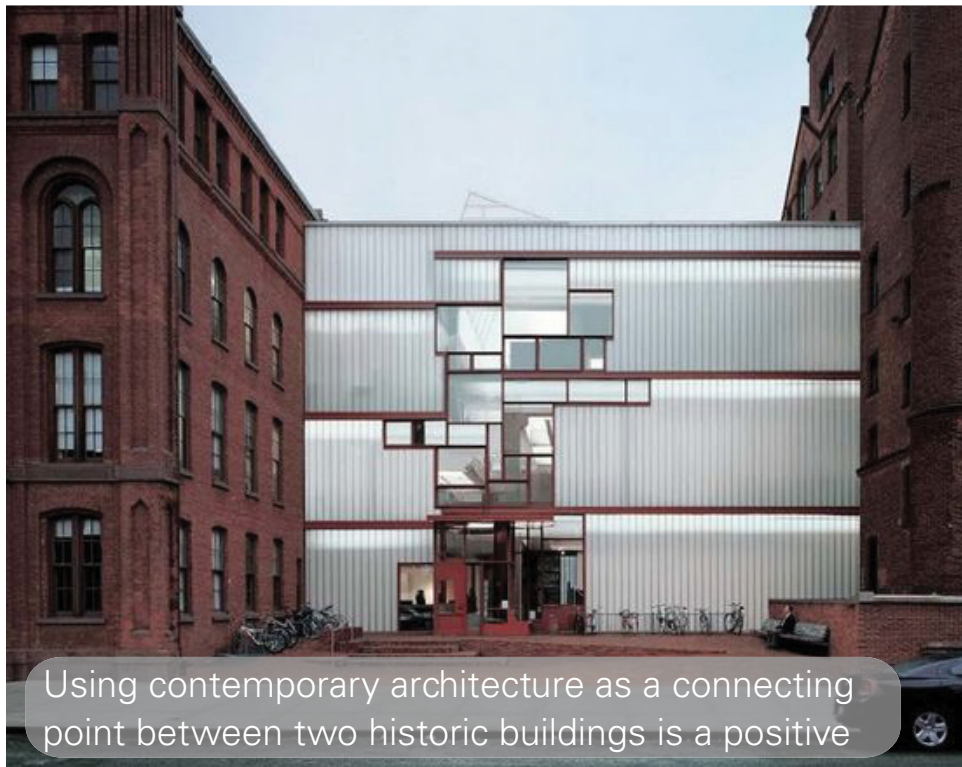


- 1. Honor the unique history and culture of Benson Polytechnic High School.**
2. Engage with the local business, government, and post-secondary partners to create strong connections between education and industry.
3. Provide hands-on, project-based learning opportunities that are imbued with rigor and relevancy.
- 4. Provide agile, flexible, and adaptable facilities that support changing educational needs.**
5. Provide learning environments that inspire creativity and collaboration among students.
6. Support a comprehensive educational experience for students.
7. Celebrate diversity and provide a sense of inclusion and belonging among students and families.
- 8. Position Benson Polytechnic as a national model for STEAM and Career Technical Education (CTE).**

# MASTER PLAN COMMITTEE FEEDBACK



- "Like glass transparency"  
- "Like"



Using contemporary architecture as a connecting point between two historic buildings is a positive



"Historic vs. Contemporary is good"



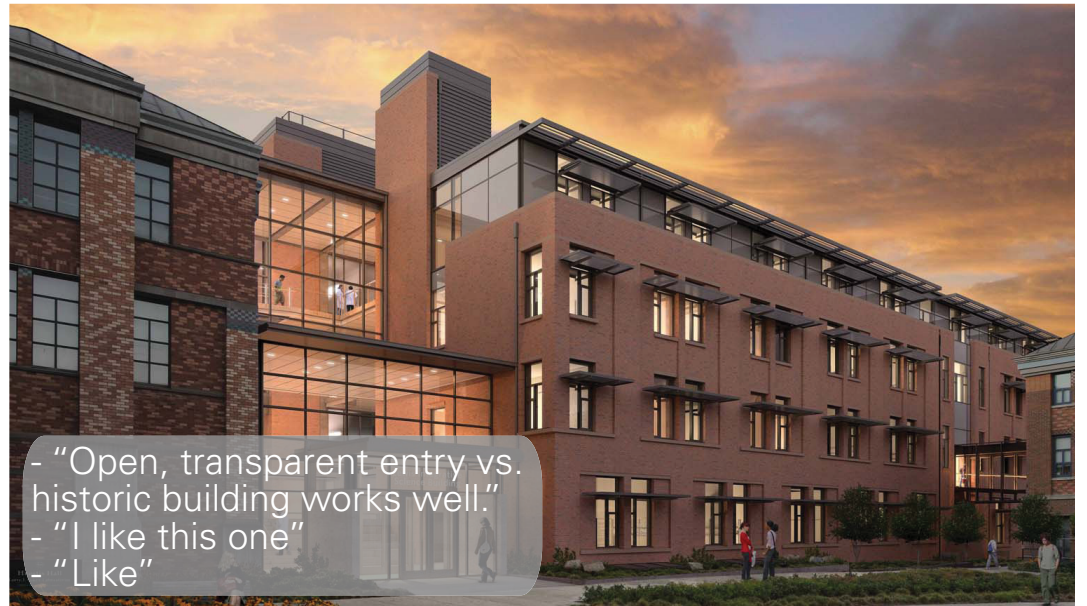
# MASTER PLAN COMMITTEE FEEDBACK



"Find areas to connect landscape and water with the architecture."



- "Terraces should open visually into adjacent buildings."  
- "Like"

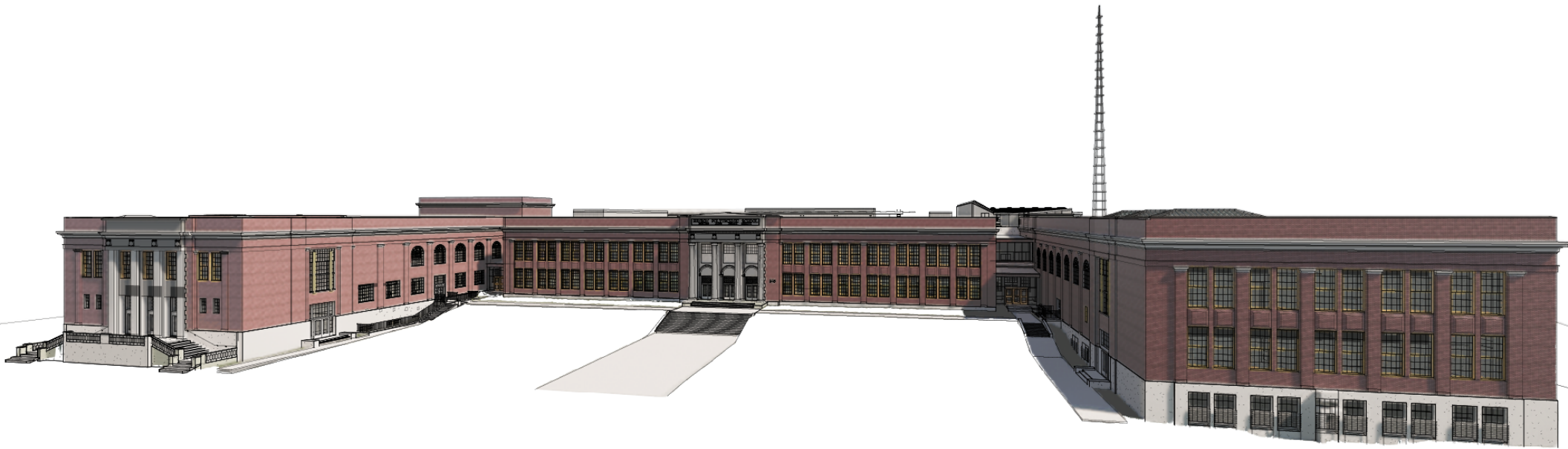


- "Open, transparent entry vs. historic building works well."  
- "I like this one"  
- "Like"

# DESIGN ADVISORY GROUP FEEDBACK



# OVERVIEW OF HISTORIC BUILDINGS FROM MAIN ENTRY



# VIEW OF HISTORIC MAIN BUILDING AND NEW VESTIBULE



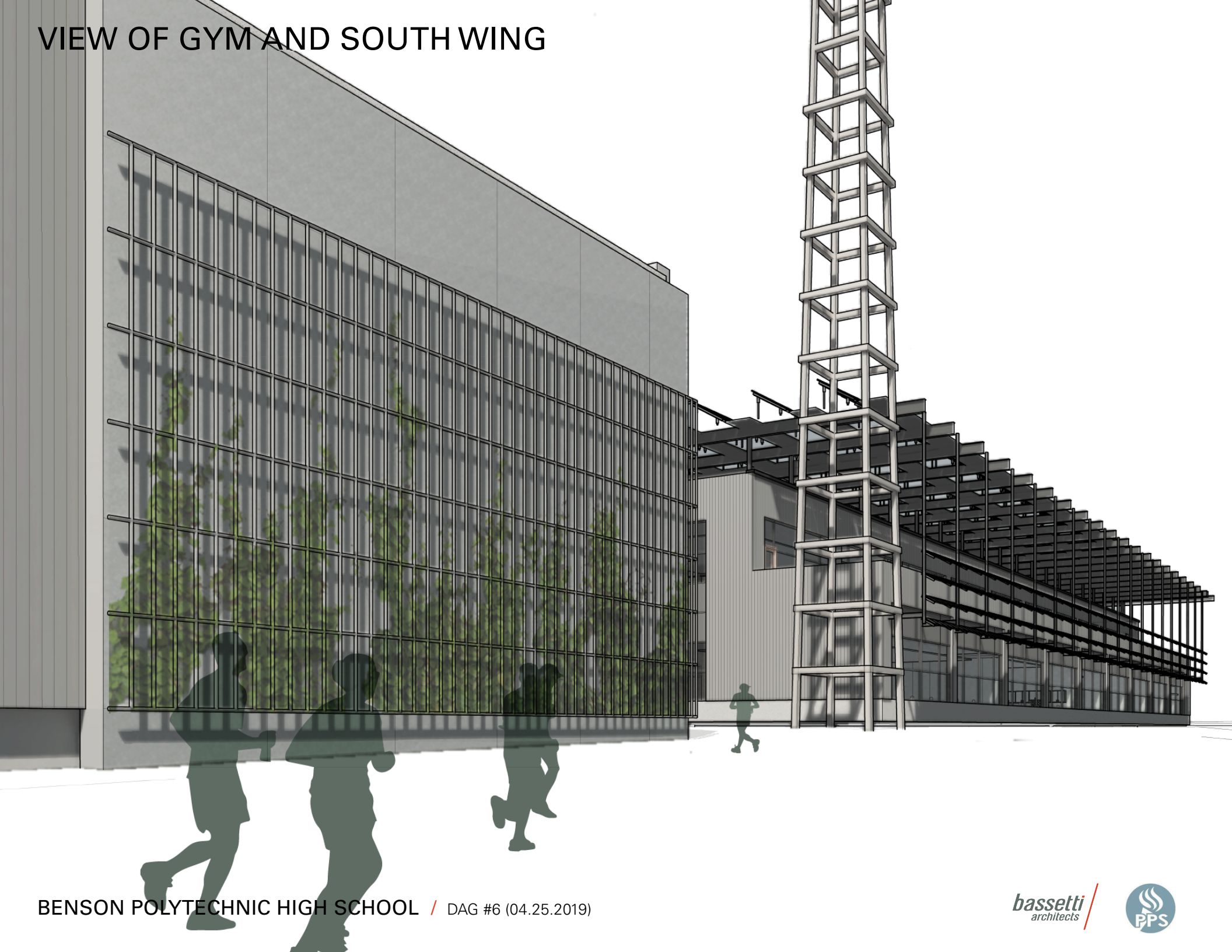
# VIEW OF NEW ADDITION AT SOCIAL COURT



# VIEW OF COMMONS EXTERIOR



# VIEW OF GYM AND SOUTH WING



# CONNECTION BETWEEN NEW ADDITION AND FOUNDRY

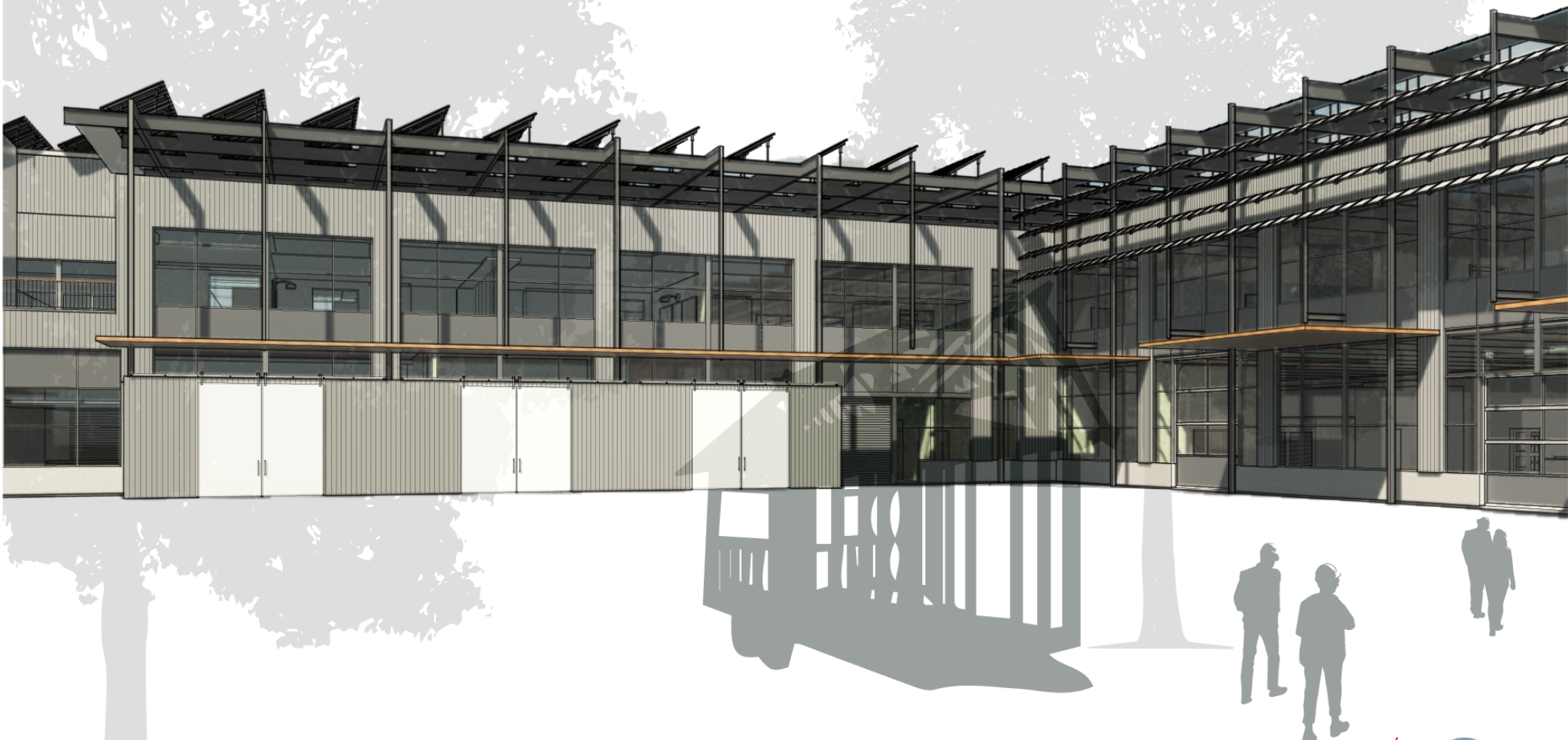




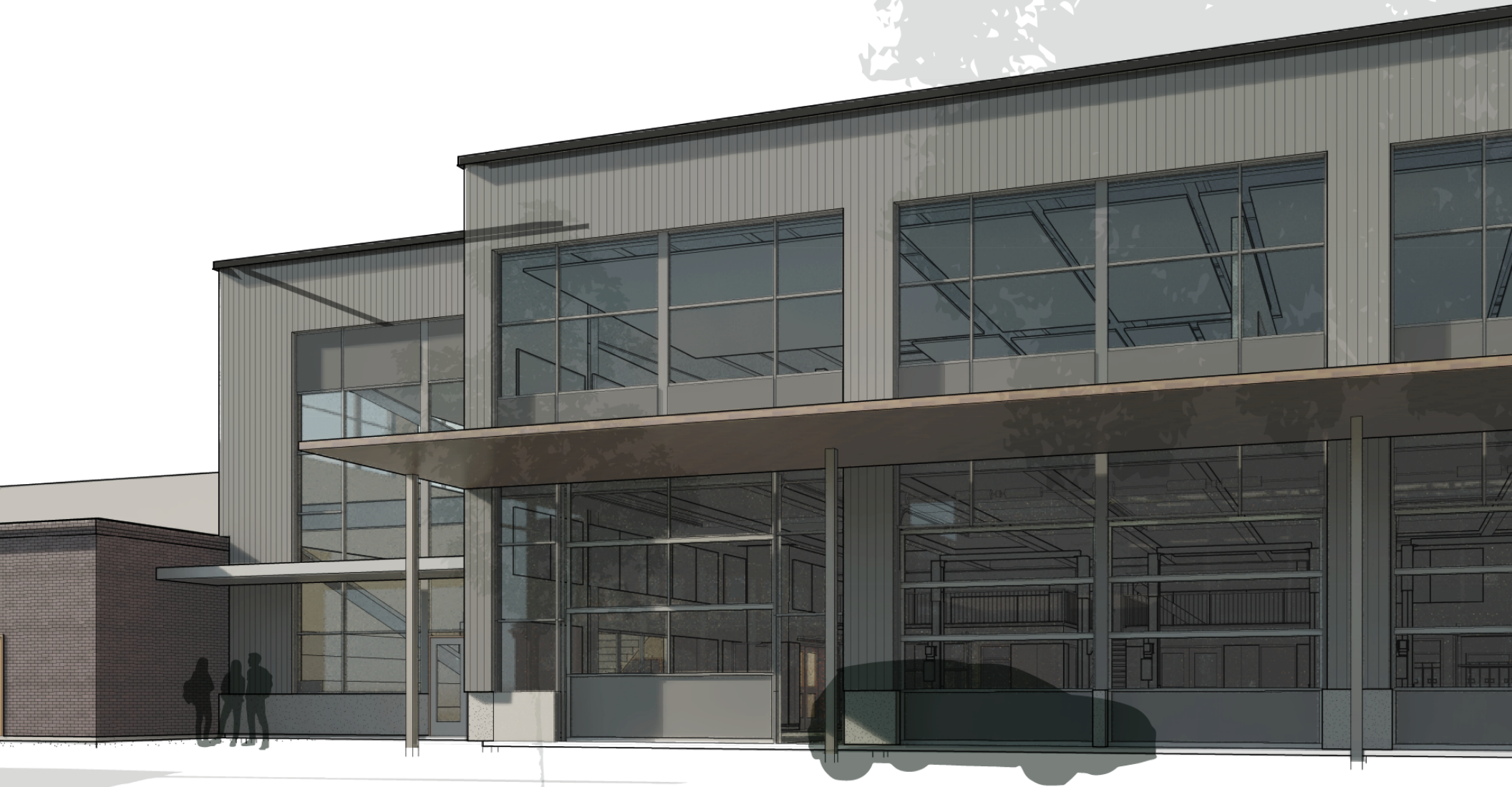
# VIEW OF NORTH WING FROM CTE COURTYARD



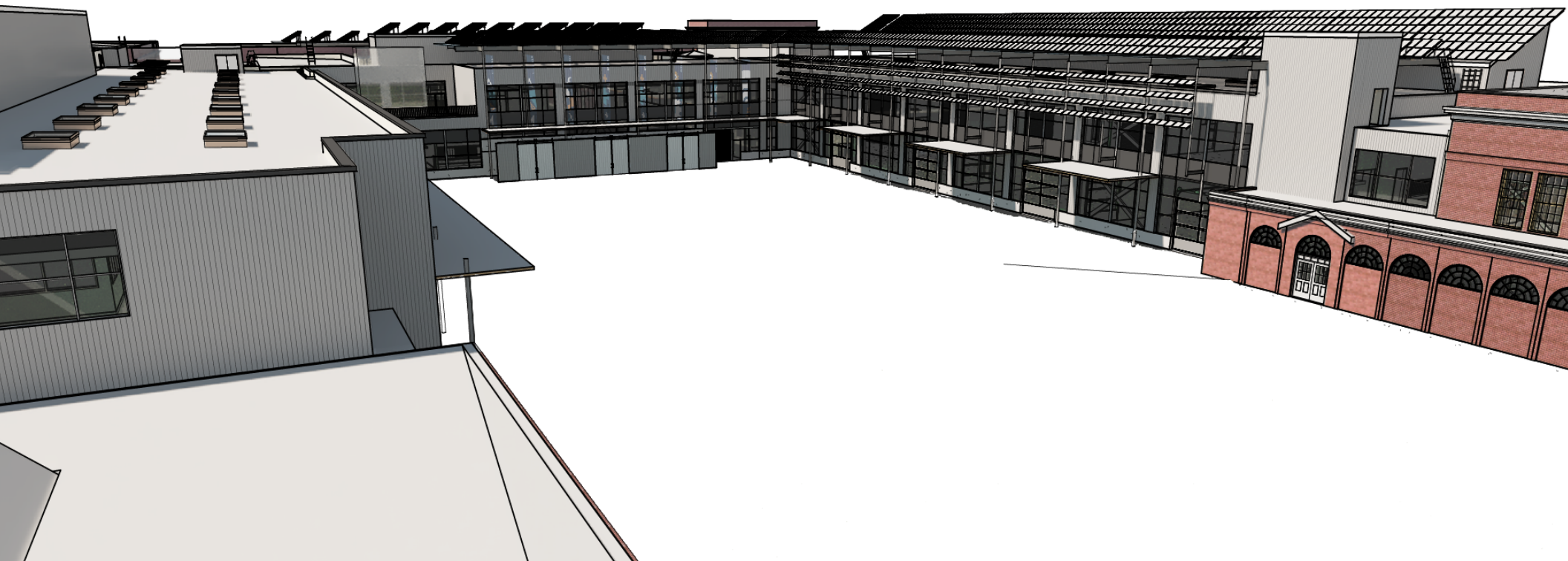
# VIEW OF EAST FACADE FROM CTE COURTYARD



# VIEW OF SOUTH WING FROM CTE COURTYARD



# OVERVIEW FROM EAST LOOKING WEST



# EXTERIOR DESIGN / INPUT ACTIVITY

# PUBLIC COMMENT / 5 MINUTES

THANK YOU. / NEXT MEETING: JUNE 6 @ 6:00PM